

# M/V Capt. Levert



## Registration

Owner	Barry Graham Oil Service, LLC
Operator	Barry Graham Oil Service, LLC
Year Built	2002
Place Built	Halimar Shipyard, LLC
Flag	USA
Classification	USCG Subchapter L, Steel Hull Construction, Utility Vessel (OSV)



## Main Characteristics

Length Overall	126 ft
Beam	30 ft
Depth	12 ft
Operating Draft	10.6 ft
Light Displacement	262.33 LT
Summer Freeboard	1.5 ft

## Capacities

Fuel	25,058 USG
Potable Water	7,572 USG
Ballast Water	46,662 USG
Rig Water	23,368 USG
Methanol	14,309 USG (340.69 BBLs)
Cooler	Walk-In 350 ft <sup>3</sup>
Freezer	Walk-In 350 ft <sup>3</sup>

## Deck Cargo

Tonnage	249 LT
Length	72 ft
Width	26 ft
Clear Deck Area	1,872 ft <sup>2</sup>

## Tonnage

Gross Registered Tons	97 GT
Net Registered Tons	66 GT

## Machinery

Main Engines	2- Cummins KTA 38-MO
Horsepower	1,600 hp
Reduction Gears	Twin disc MG5225
Gear Ratio	5.04:1
Generators	2- Cummins/Onan 6B5.9-D (m) 55kw
Tunnel Bow Thruster	300 hp
Fire Monitor	2,500 gpm

## Performance

Maximum Speed (Light Ship)	13.8 knots (57 LT)
Maximum Speed (Full Load)	11.5 knots (350 LT)

## Fuel Consumption

Maximum Speed (Light Ship)	78 USG/hour
Maximum Speed (Full Load)	78 USG/hour

## Accommodations

Crew	4 persons
Maximum Passengers	36 persons
	Limited to 16 persons when carrying Methyl Alcohol
Berths	16
Offshore Standby Service	Maximum of 75 persons in accordance with 33 CFR 143, subpart E

## Electronics & Controls

Radar	Magnetic Compass
GPS Positioning Plotter	EPIRB 406 MHZ
SSB Radio	Loudhailer
3 VHF Radios	PA System
AIS Locating	Navtex
Depth Sounder	Boatrac
Chart Plotter	Satellite Telephone

## Special Equipment

Life Floats	40 Total Capacity
Life Preservers	40 Adult
Rescue Equipment	Rescue Platform, Ring Buoys
DAVIT	USCG Inspected
Fuel Meter	Rotary Meter, Flow Meter
	Register with Printer
Engine Monitoring	CSP
Search Lights	3 Total
Firefighting	Hand Portable & Semi-Portable throughout vessel
	Integrated Smoke & Heat Detection

### Corporate Office

Physical Address  
12354 Padgett Switch Road  
Irvington, Alabama 36544  
P: 251.824.2774 F: 251.824.7058

### Mailing Address

P.O. Box 982  
Bayou La Batre, Alabama 36509

### Operations Office

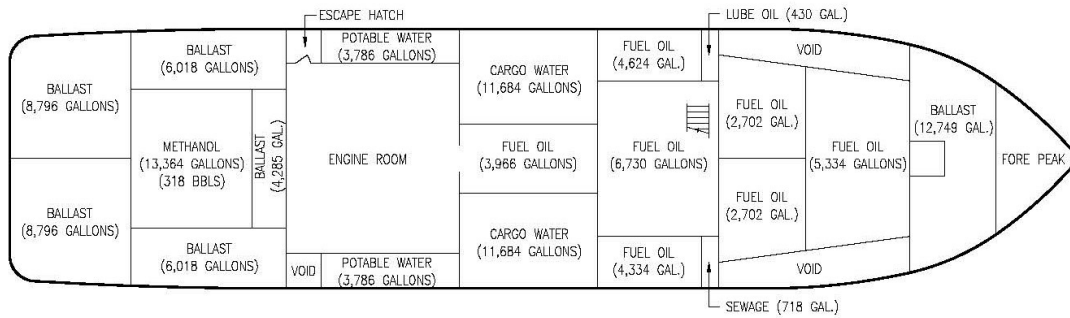
Physical Address  
6044-B Railroad Avenue  
Morgan City, Louisiana 70380  
P: 985.702.9883 F: 985.702.9885

### Mailing Address

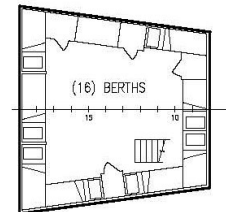
P.O. Box 3403  
Morgan City, Louisiana 70381

This specification is preliminary and subject to change without notice. Exact tank capacities, deadweight, deck cargo capacity and other figures that have been calculated may change when the actual vessel is delivered. As such, these particulars should be taken as indicative and do not constitute warranty. For additional information, please contact Barry Graham Oil Service, LLC at [www.bgos.net](http://www.bgos.net).

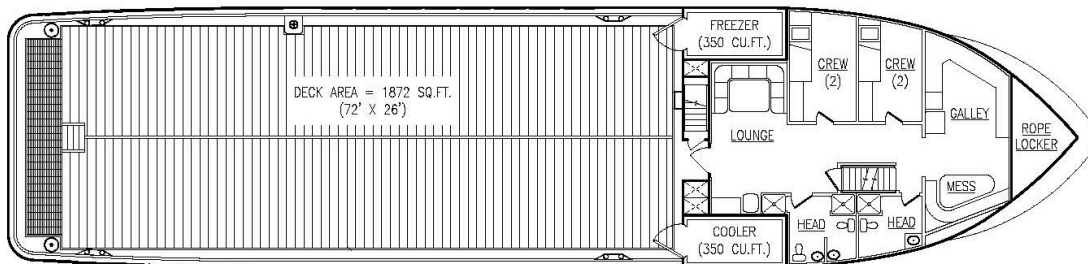
# M/V Capt. Levert



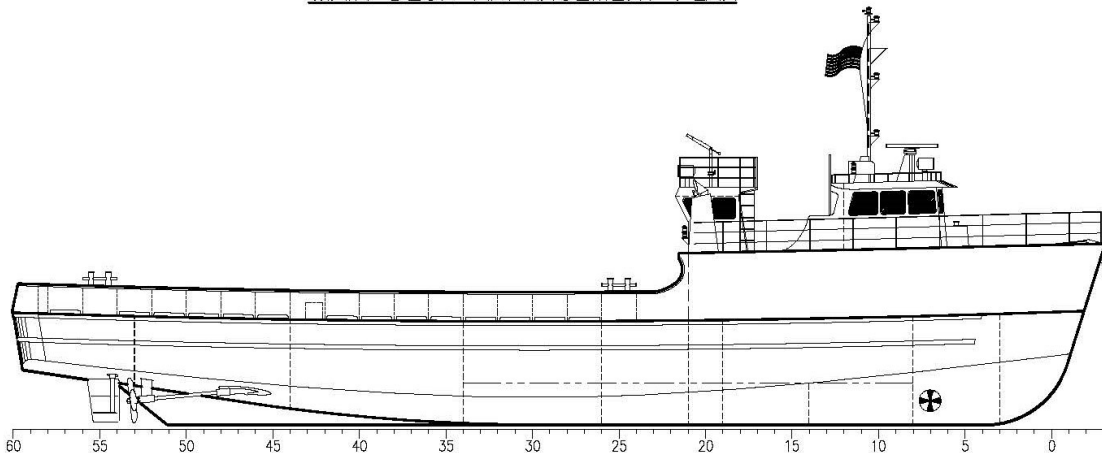
**TANK ARRANGEMENT PLAN**



**INDUSTRIAL PERSONNEL ACCOMMODATIONS**



**MAIN DECK ARRANGEMENT PLAN**



**OUTBOARD PROFILE**

**BARRY GRAHAM OIL SERVICE, L.L.C.**

POST OFFICE BOX 982  
BAYOU LA BATRE, AL 36509  
(251) 824-2774 FAX: (251) 824-7958

**126'x30'x12'-0" OFFSHORE SUPPLY VESSEL**